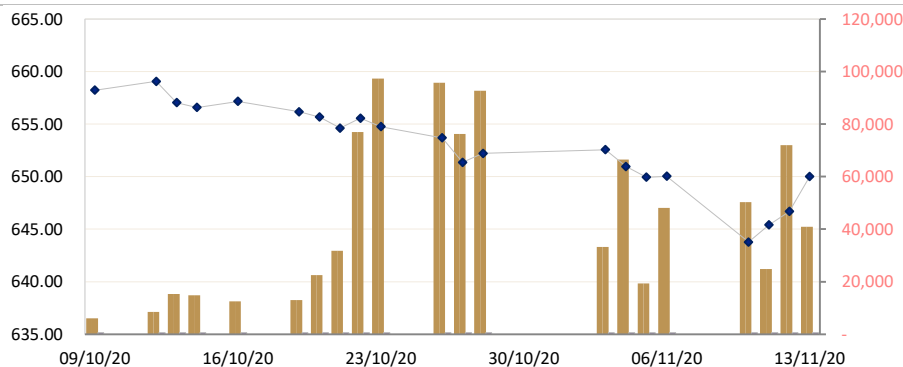




CAMBODIA SECURITIES EXCHANGE: MARKET SUMMARY

Index / Companies	Previous Day	Open	Closing	Change	% Change	From Listed till Today		Volume	Value (KHR)
						High	Low		
Index	646.69	647.29	650.02	3.33	▲0.51	1,108	305	40,973	289,012,860
PPWSA	5,780	5,780	5,800	20	▲0.34	10,300	2,700	2,925	17,121,320
GTI	3,200	3,100	3,100	-100	▼3.23	9,780	2,110	130	403,000
PPAP	11,480	11,500	11,680	200	▲1.71	13,380	4,600	120	1,378,800
PPSP	1,840	1,850	1,810	-30	▼1.66	3,650	1,710	23,653	42,811,980
PAS	13,680	13,680	13,700	20	▲0.15	23,800	4,620	965	17,992,100
ABC	17,080	17,100	17,200	120	▲0.70	23,600	16,180	12,371	211,581,340
PEPC	3,150	3,050	3,110	-40	▼1.29	3,990	2,900	809	17,992,100

CSX DAILY STOCK INDEX (Last 30 Days)



LISTED COMPANIES

PPWSA	Phnom Penh Water Supply Authority
Industry	Water Utility
GTI	Grant Twins Int. (Cambodia) Plc.
Industry	Apparel Clothing
PPAP	Phnom Penh Autonomous Port.
Industry	Port Services
PPSP	Phnom Penh SEZ PLC.
Industry	SEZ Developer
PAS	Sihanouk Ville Autonomous Port.
Industry	Port Services
ABC	ACLEDA Bank
Industry	Financial
PEPC	PESTECH Cambodia
Industry	Electricity

SECURITIES NEWS

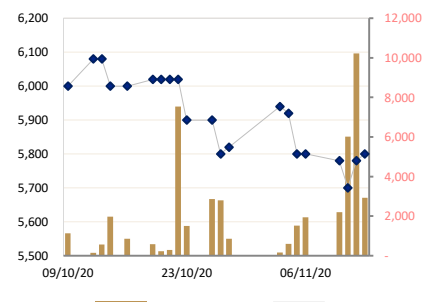
CAMBODIA : Market Watch

The Cambodia Securities Exchange index registered another small recovery yesterday, clawing back the large losses that occurred at the start of the week as the index rose 1.29 points (0.2 percent) to close at 646.69 points. Trading values were below average at 281,552,860 riels (\$69,220) but volumes were higher at 72,026 shares exchanged. The recovery was led by Sihanoukville Autonomous Port (PAS), Pestech Cambodia (PEPC) and Penh Water Supply Authority (PWASA), which rose 60, 100, and 80 riels. The market movers ACLEDA Bank (ABC) and Phnom Penh Special Economic Zone (PPSP) exchanged 92 million and 89 million riels but both held steady to close at 17,080 and 1,840 riels a share. Grand Twin International Cambodia (GTI) and Phnom Penh Autonomous Port (PPAP) also held steady at 17,080 and 11,480 riels a share. (Khmer Time New)

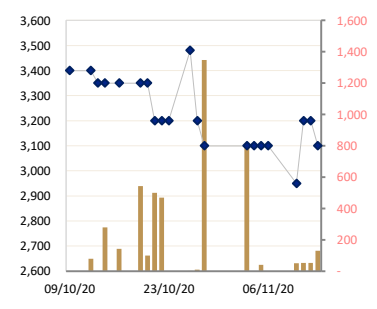
CAMBODIA : First application for Growth Board IPO coming this month

The Cambodia Securities Exchange (CSX) is set to receive its first-ever initial public offering (IPO) approval application for a company to list on its Growth Board in more than five years since the secondary board was first launched. According to the company's underwriter SBI Royal Securities, the Listing Eligibility Review Application and Disclosure Document will be submitted to the CSX and its regulator the Securities Exchange of Commission of Cambodia (SECC) this month. They added information about the company in detail, including its name, will be released after the SECC's approval. It was disclosed that it has an annual revenue of \$9 to \$10 million and profit of more than \$1 million awarded under the Excellence Program of the SECC. Seng Chan Thoeun, managing director at SBI Royal Securities said, "I have been working on this company's application for more than two years. It is a good growth-board company but the biggest hurdles to overcome have been the audited financial statements and first-time adoption of international financial reporting standards, which require three years of figure comparisons," he said. "Though there are challenges in preparation, the board is a great place for SMEs looking for capital," he added. (Khmer Times New)

PPWSA DAILY STOCK PRICE



GTI DAILY STOCK PRICE



CAMBODIA : PPSP yet to implement buyback as share price hits record low level

Phnom Penh Special Economic Zone (PPSP) share price hit a record low on Friday, closing at 1,850 riels a share as the company says it is still working on “internal information” for the share buyback plan approved by shareholders last month. Chief Financial Officer at PPSP Fong Nee Wai responded to questions on when the company would submit documents for approval by the regulator, stating: “Internally we are preparing some information relevant to this exercise to be carried out.” He added: “Once ready, we will share with you the information, which must be after we have submitted to and consented with the SECC [Securities Exchange Commission of Cambodia],” he added. Cambodian Securities Exchange Chief Operating Officer Ha Jong Weon said the company is yet to disclose any formal documentation regarding the buyback. “In regards to the share buyback, further information [on the number of shares and the offered price] has not yet been disclosed from the company. To proceed with this matter, PPSP shall seek approval from the SECC,” he said. The PPSP share price has been on a downward trend since hitting a record high of 3,650 riels a share on Jan 28, 2019, up from its original 2,890 riels when it first listed in May 2016. *(Khmer Time News)*

CAMBODIA : More than half of stocks now below float price

The Cambodia Securities Exchange (CSX), its regulator, licensed underwriters and investors have responded to market concerns that four out of seven listed stocks have now fallen below their initial public offering price (IPO). At the close of the market yesterday, Grand Twins International (Cambodia) Plc (GTI) was trading 69 percent below its 2014 IPO and Phnom Penh SEZ Plc (PPSP) at 35 percent below its 2016 launch. Phnom Penh Water Supply Authority (PPWSA) was trading 8 percent below its 2012 IPO and Pestech (Cambodia) Plc (PEPC) was also 8 percent below its launch price in August this year. The failure of these stocks to increase, or at least maintain, their initial value is worrying some potential investors as the CSX continues to try to attract more equity listings onto the local exchange, as well as encouraging more trading in the market to increase liquidity, seen as a major contributing factor to falling share prices, through an improved trading eco-system and overall community awareness. CSX Chief Operations Officer Ha Jong Weon said it was important to note the stock performance does not always reflect company performance. He added the fall of prices to below an IPO valuation might be because of the trading behaviour of investors who follow market trends more than business results. *(Khmer Time News)*

BUSINESS & ECONOMIC NEWS

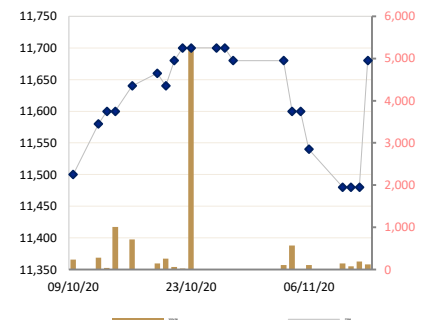
CAMBODIA : Increased free trade deals ‘need many more experts’

The signing of international trade agreements and the potential for more on the horizon will require Cambodia to conduct detailed trade impact assessments (TIAs) more frequently as the country seeks more bilateral and multilateral trade deals. Sok Sopheap, Secretary of State of the Ministry of Commerce, said since Cambodia became a member of the World Trade Organization in 2004, the country has been rapidly and actively integrating into regional economic and trade systems. “All the FTAs [free trade agreements] that Cambodia has entered into and is considering have undergone the most thorough assessments to weigh their social and economic impacts and ensure both sustainability and sustainable development,” he said. “As a result, Cambodia is in need of additional human resources, particularly trade negotiators, with the specific trade impact assessment knowledge and experience to verify the benefit of establishing FTAs with Cambodia’s potential trading partners in the future,” noted Sopheap. *(Khmer Times New)*

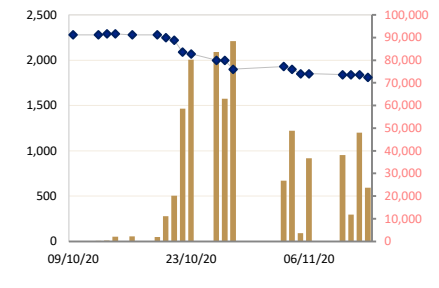
CAMBODIA : Cambodia's exports up 18 per cent in first eight months

PHNOM PENH (Xinhua): Cambodia exported products worth US\$11.7 billion in the first eight months of 2020, up 18 per cent over the same period last year, said a report released by the Ministry of Economy and Finance Wednesday (Nov 11). Topping the list of export items were gold, milled rice, bicycles, electrical appliances and agricultural produce such as legumes, cashew nuts and bananas, the report said. During the January-August period this year, the exports of gold, milled rice, bicycles, and electrical appliances rose by 716 per cent, 23 per cent, 27 per cent and 22 per cent, respectively if compared to the same period last year, it said, adding that the export of gold was valued at \$2.22 billion. “During the first eight months of 2020, Cambodia’s export is still on the rise even though the world’s economy is expected to experience negative growth and our trading partners have been facing challenges caused by the Covid-19 pandemic,” the report said. On the import side, the Southeast Asian nation shipped in goods worth \$11.8 billion during the first eight months of this year, down 11.6 per cent over the same period last year, it added. *(Cambodia Daily News)*

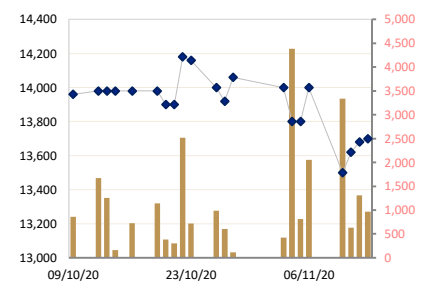
PPAP DAILY STOCK PRICE



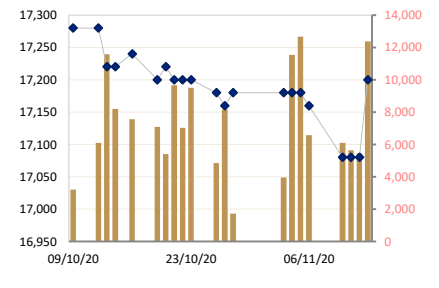
PPSP DAILY STOCK PRICE



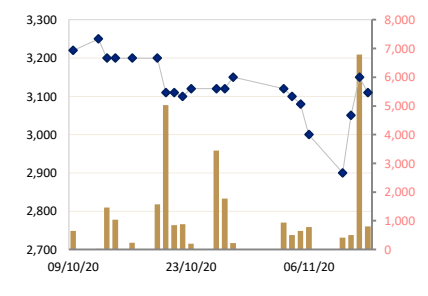
PAS DAILY STOCK PRICE



ABC DAILY STOCK PRICE



PEPC DAILY STOCK PRICE



CAMBODIA : Green SEZ set for Svay Rieng town

Chinese-owned industrial park developer and operator QiLu (Cambodia) Special Economic Zone Co Ltd on Thursday signed a strategic partnership with Environmental Protection Industry Associations of Cambodia (Epiac). QiLu is behind a 450ha special economic zone (SEZ) planned for Svay Rieng town, the administrative centre of the eponymous province, which is expected to cost \$1 billion. It says the SEZ will be 4km from the town centre just south of National Road 1. Blueprints of the industrial zone show that the project is on the northern bank of a river. The deal aims to guide QiLu in creating an integrated environmentally friendly SEZ that “welcomes foreign investors to the border province”. Speaking at the signing ceremony, QiLu director Xing Baoguo said the government issued a sub-decree on March 28, 2017 establishing the SEZ. He said the zone would be built in three phases – Phase I will be laid on 215ha, Phase II will cover 145ha and Phase III will add 90ha. It would be partitioned by industry into six areas – garments, textiles, light industrial products, machine components, construction material and chemicals, he added. “With the fast development of Cambodia’s economy, there is the focus on ecology and environment as keys for the country’s sustainable economic growth. (*Phnom Penh Post*)

CAMBODIA : OCIC set to spend \$2.5B on capital’s satellite city

Local company Overseas Cambodian Investment Corp Ltd (OCIC) on Monday announced plans to spend a total of \$2.5 billion to develop the Koh Norea peninsula in southeastern Phnom Penh into a new satellite city. The announcement comes as the firm broke ground on two monumental bridge projects – one connecting Koh Pich in Chamkarmon district’s Tonle Bassac commune to the Koh Norea Development Zone in Chbar Ampov district’s Niroth commune, and another linking Koh Norea to National Road 1. Speaking at the bridges’ groundbreaking ceremony, OCIC chairman of the board of directors Pung Kheav Se said \$550 million of the capital investment will be spent on infrastructure development in the satellite city. Developed on 125ha, the project will be able to receive 50,000 residents upon completion, he said. “I would like to take this opportunity to thank the Royal Government of Cambodia for its continued support of the company’s development projects, in particular, the Koh Norea investment development project, which is developed by the Cambodian government as a new satellite city in Chbar Ampov district, Phnom Penh. “The Koh Norea development project will bring a lot of socio-economic benefits to our country. “Cambodia is in need of many more investment projects to sustain and reinforce its economy, especially in the face of the difficult economic conditions amid the global health crisis,” he said. (*Phnom Penh Post*)

CHINA : Chinese spend \$100B on Singles Day

Chinese shoppers splurged more than \$100 billion in the world’s biggest shopping event of the year, in a huge spending spree that suggests the country’s all-important army of consumers is fighting back after months of pandemic agony. Hundreds of millions used online stores to scoop up bargains in the Singles’ Day consumer marathon that dwarfs the US “Black Friday” phenomenon. Everything from jewellery and video games to furniture and food was sold on the country’s biggest e-commerce platforms run by tech titans Alibaba and JD.com. While “Singles’ Day” – so-called for its annual 11.11 date – has long been a 24-hour event, its creator Alibaba has expanded it to an 11-day promotion beginning November 1. Alibaba on Thursday said it took 498.2 billion yuan (\$74 billion) worth of orders during the extravaganza, a 26 per cent rise on the same period last year, while JD.com recorded sales valuing 271.5 billion yuan. However Alibaba did not publish a tally for Wednesday’s takings, making it hard to directly compare sales. Last year, sales on Alibaba platforms alone for the 24-hour period totalled \$38.4 billion. This year’s event took on even more significance as it was seen as a bellwether of consumer sentiment in the world’s number two economy as it recovers from the pain of coronavirus lockdowns (*Phnom Penh Post*)

UK : UK sheds record number of jobs in pandemic fallout

AFP – Britain’s unemployment rate has jumped to 4.8 percent as the Coronavirus pandemic destroys a record number of UK jobs, official data showed yesterday. The reading for the third quarter compared with an unemployment rate of 4.5 percent for June-August, the Office for National Statistics (ONS) said in a statement. “The employment rate has been decreasing since the start of the Coronavirus pandemic, while the unemployment rate is now rising sharply,” the ONS said. “Redundancies have reached a record high,” it added. Since the start of the UK pandemic in March, the number of payroll employees has dived by 782,000, the data showed. In the third quarter, or July-September period, UK redundancies reached a record high of 314,000. This exceeded the quarterly record in the wake of the global financial crisis in 2009, the ONS said. “Today’s figures underlines the scale of the challenge we’re facing,” Finance Minister Rishi Sunak said in a separate statement. “I know that this is a tough time for those who have sadly already lost their jobs, and I want to reassure anyone that is worried about the coming winter months that we will continue to support those affected,” he added. (*Khmer Time New*)

Historical Trading Data (Latest Month)

Date	Index/Stock	Open	High	Low	Close	Change	Δ (%)	Volume	Value (mil. KHR)	Value (\$)*	Mar. Cap. (mil. KHR)	Remain Quantity	
												Sell	Buy
13/11/20	Index	647.29	650.02	646.01	650.02	3.33	▲0.51%	40,973	289,012,860	72,253	9,858,690	96,358	56,578
	PPWSA	5,780	5,900	5,780	5,800	20.00	▲0.34%	2,925	17,121,320	4,280.33	504,444	9,307	6,700
	GTI	3,100	3,100	3,100	3,100	-100.00	▼3.12%	130	403,000	100.75	124,000	4,460	465
	PPAP	11,500	11,680	11,480	11,680	200.00	▲1.74%	120	1,378,800	344.70	241,593	5,758	1,936
	PPSP	1,850	1,850	1,800	1,810	-30.00	▼1.63%	23,653	42,811,980	10,703.00	130,094	46,875	36,493
	PAS	13,680	13,740	13,640	13,700	20.00	▲0.14%	965	13,208,780	3,302.20	1,175,076	6,640	5,775
	ABC	17,100	17,200	17,080	17,200	120.00	▲0.70%	12,371	211,581,340	52,895.34	7,450,404	7,783	3,565
PEPC	3,050	3,120	3,050	3,110	-40.00	▼1.26%	809	2,507,640	626.91	233,079	15,535	1,644	
12/11/20	Index	645.40	647.26	644.94	646.69	1.29	▲0.20%	72,026	281,552,860	70,388	9,808,273	95,605	64,468
	PPWSA	5,700	5,780	5,680	5,780	80.00	▲1.40%	10,220	58,235,560	14,558.89	502,705	8,462	6,405
	GTI	3,200	3,200	3,200	3,200	0.00	0.00%	52	166,400	41.60	128,000	5,613	467
	PPAP	11,500	11,500	11,480	11,480	0.00	0.00%	193	2,217,600	554.40	237,457	10,530	1,896
	PPSP	1,840	1,910	1,800	1,840	0.00	0.00%	48,029	89,070,600	22,267.65	132,250	41,764	34,676
	PAS	13,500	13,780	13,500	13,680	60.00	▲0.44%	1,309	17,992,100	4,498.03	1,173,361	8,019	5,038
	ABC	17,100	17,100	17,040	17,080	0.00	0.00%	5,437	92,813,900	23,203.48	7,398,424	13,591	14,976
PEPC	3,100	3,150	3,050	3,150	100.00	▲3.27%	6,786	21,056,700	5,264.18	236,077	7,626	1,010	
11/11/20	Index	645.93	646.72	642.78	645.40	1.62	▲0.25%	24,778	163,720,400	40,930	9,788,674	93,499	47,339
	PPWSA	5,800	5,800	5,700	5,700	-80.00	▼1.38%	6,023	34,911,020	8,727.76	495,747	2,552	3,792
	GTI	3,200	3,200	3,200	3,200	250.00	▲8.47%	52	166,400	41.60	128,000	4,488	2,572
	PPAP	11,480	11,480	11,480	11,480	0.00	0.00%	77	883,960	220.99	237,457	10,623	869
	PPSP	1,850	1,850	1,800	1,840	0.00	0.00%	11,851	21,433,840	5,358.46	132,250	48,925	20,555
	PAS	13,880	13,880	13,620	13,620	120.00	▲0.88%	633	8,689,540	2,172.39	1,168,214	9,002	3,443
	ABC	17,080	17,080	17,000	17,080	0.00	0.00%	5,642	96,110,640	24,027.66	7,398,424	11,125	11,407
PEPC	3,050	3,050	3,050	3,050	150.00	▲5.17%	500	1,525,000	381.25	228,582	6,784	4,701	
10/11/20	Index	650.03	650.03	639.06	643.78	-6.25	▼0.96%	50,355	233,993,680	58,498	9,764,098	107,019	62,396
	PPWSA	5,700	5,880	5,700	5,780	-20.00	▼0.34%	2,189	12,619,840	3,154.96	502,705	9,560	4,707
	GTI	2,950	2,950	2,950	2,950	-150.00	▼4.83%	50	147,500	36.88	118,000	4,677	492
	PPAP	11,480	11,480	11,480	11,480	-60.00	▼0.51%	145	1,664,600	416.15	237,457	10,730	2,108
	PPSP	1,850	1,850	1,800	1,840	-10.00	▼0.54%	38,129	69,215,900	17,303.98	132,250	45,157	33,145
	PAS	14,000	14,000	13,500	13,500	-500.00	▼3.57%	3,336	45,206,300	11,301.58	1,157,922	11,401	8,162
	ABC	17,160	17,160	16,900	17,080	-80.00	▼0.46%	6,090	103,920,140	25,980.04	7,398,424	16,107	11,808
PEPC	3,000	3,000	2,900	2,900	-100.00	▼3.33%	416	1,219,400	304.85	217,341	9,387	1,974	
06/11/20	Index	649.94	650.76	646.39	650.03	0.09	▲0.01%	48,126	221,839,320	55,460	9,858,831	137,756	42,346
	PPWSA	5,820	5,820	5,700	5,800	0.00	0.00%	1,938	11,083,320	2,770.83	504,444	24,181	5,725
	GTI	3,100	3,100	3,100	3,100	0.00	0.00%	0	0	0.00	124,000	4,540	611
	PPAP	11,600	11,600	11,540	11,540	-60.00	▼0.51%	108	1,252,320	313.08	238,698	10,728	395
	PPSP	1,840	1,890	1,800	1,850	0.00	0.00%	36,673	66,461,480	16,615.37	132,969	54,227	19,280
	PAS	14,000	14,000	13,500	14,000	200.00	▲1.44%	2,055	27,965,700	6,991.43	1,200,808	12,471	4,306
	ABC	17,180	17,180	17,140	17,160	-20.00	▼0.11%	6,566	112,711,720	28,177.93	7,433,077	18,114	11,824
PEPC	3,020	3,020	3,000	3,000	-80.00	▼2.59%	786	2,364,780	591.20	224,835	13,495	205	
05/11/20	Index	650.97	650.97	649.71	649.94	-1.03	▼0.16%	19,384	246,586,400	61,647	9,857,576	146,241	52,484
	PPWSA	5,920	5,920	5,800	5,800	-120.00	▼2.02%	1,518	8,835,680	2,208.92	504,444	46,425	6,070
	GTI	3,100	3,100	3,100	3,100	0.00	0.00%	40	124,000	31.00	124,000	4,500	503
	PPAP	11,600	11,600	11,600	11,600	0.00	0.00%	0	0	0.00	239,939	10,761	1,441
	PPSP	1,900	1,900	1,850	1,850	-50.00	▼2.63%	3,693	6,922,200	1,730.55	132,969	45,607	22,582
	PAS	13,800	13,800	13,800	13,800	0.00	0.00%	813	11,219,400	2,804.85	1,183,653	9,867	6,484
	ABC	17,180	17,180	17,140	17,180	0.00	0.00%	12,667	217,470,820	54,367.71	7,441,741	18,739	11,155
PEPC	3,100	3,100	3,080	3,080	-20.00	▼0.64%	653	2,014,300	503.58	230,831	10,342	4,249	
04/11/20	Index	652.42	652.99	646.67	650.97	-1.59	▼0.24%	66,491	362,514,450	90,629	9,873,106	143,011	39,811
	PPWSA	5,940	5,940	5,900	5,920	-20.00	▼0.33%	589	3,481,900	870.48	514,881	31,039	3,776
	GTI	3,100	3,100	3,100	3,100	0.00	0.00%	0	0	0.00	124,000	5,237	1,570
	PPAP	11,680	11,680	11,600	11,600	-80.00	▼0.68%	569	6,606,000	1,651.50	239,939	10,024	1,178
	PPSP	1,900	1,930	1,850	1,900	-30.00	▼1.55%	48,893	92,826,110	23,206.53	136,563	51,842	14,814
	PAS	14,000	14,000	13,000	13,800	-200.00	▼1.42%	4,387	59,672,340	14,918.09	1,183,653	9,964	3,313
	ABC	17,180	17,200	17,160	17,180	0.00	0.00%	11,545	198,352,840	49,588.21	7,441,741	15,450	10,678
PEPC	3,100	3,110	3,100	3,100	-20.00	▼0.64%	508	1,575,260	393.82	232,330	19,455	4,482	
03/11/20	Index	654.61	655.65	650.61	652.56	0.34	▲0.05%	33,192	132,445,960	33,111	9,897,309	147,645	57,118
	PPWSA	6,000	6,000	5,940	5,940	120.00	▲2.06%	161	958,080	239.52	516,621	27,092	2,066
	GTI	3,390	3,390	3,100	3,100	0.00	0.00%	791	2,461,090	615.27	124,000	3,819	1,561
	PPAP	11,700	11,700	11,680	11,680	0.00	0.00%	109	1,273,300	318.33	241,593	10,029	796
	PPSP	1,950	1,950	1,710	1,930	30.00	▲1.57%	26,801	50,778,460	12,694.62	138,719	61,465	33,464
	PAS	14,200	14,200	14,000	14,000	-60.00	▼0.42%	424	5,937,940	1,484.49	1,200,808	14,079	2,155
	ABC	17,200	0	17,120	17,180	0.00	0.00%	3,964	68,091,580	17,022.90	7,441,741	19,955	15,600
PEPC	3,150	3,150	3,110	3,120	-30.00	▼0.95%	942	2,945,510	736.38	233,828	11,206	1,476	
28/10/20	Index	651.12	653.46	650.99	652.22	0.86	▲0.13%	92,732	210,678,590	52,670	9,892,111	179,116	37,148
	PPWSA	5,800	6,000	5,800	5,820	20.00	▲0.34%	855	5,012,960	1,253.24	506,184	24,300	5,553
	GTI	3,100	3,100	3,100	3,100	-100.00	▼3.12%	1,347	4,175,700	1,043.93	124,000	3,539	1,660
	PPAP	11,680	11,680	11,680	11,680	-20.00	▼0.17%	10	116,800	29.20	241,593	11,080	1,722
	PPSP	1,950	1,970	1,900	1,900	-100.00	▼5.00%	88,447	169,340,890	42,335.22	136,563	91,316	8,791
	PAS	14,080	14,080	14,060	14,060	140.00	▲1.00%	112	1,575				

	PPWSA	5,900	5,900	5,800	5,900	0.00	0.00%	2,853	16,710,900	4,177.73	513,142	28,725	2,939
	GTI	3,480	3,480	3,480	3,480	280.00	▲8.75%	1	3,480	0.87	139,200	2,256	1,630
	PPAP	11,700	11,700	11,700	11,700	0.00	0.00%	2	23,400	5.85	242,007	10,035	395
	PPSP	2,000	2,000	1,900	2,000	-70.00	▼0.00%	83,572	164,037,100	41,009.28	143,750	152,574	23,862
	PAS	14,160	14,160	13,900	14,000	-160.00	▼1.12%	990	13,779,800	3,444.95	1,200,808	12,947	2,805
	ABC	17,200	17,200	17,140	17,180	-20.00	▼0.11%	4,856	83,411,380	20,852.85	7,441,741	22,706	10,770
	PEPC	3,120	3,120	3,000	3,120	0.00	0.00%	3,447	10,591,890	2,647.97	233,828	5,226	1,743
23/10/20	Index	655.14	655.94	654.31	654.76	-0.80	▼0.12%	97,369	409,324,100	102,331	9,930,693	141,740	65,982
	PPWSA	5,980	5,980	5,900	5,900	-120.00	▼1.99%	1,504	8,909,720	2,227.43	513,142	23,829	3,891
	GTI	3,200	3,200	3,200	3,200	0.00	0.00%	0	0	0.00	128,000	3,701	1,810
	PPAP	11,700	11,700	11,700	11,700	0.00	0.00%	5,210	60,957,000	15,239.25	242,007	5,628	900
	PPSP	2,000	2,100	2,000	2,070	-20.00	▼0.95%	80,230	165,213,600	41,303.40	148,781	66,502	44,154
	PAS	14,200	14,200	14,000	14,160	-20.00	▼0.14%	721	10,228,400	2,557.10	1,214,531	12,227	3,139
	ABC	17,200	17,220	17,180	17,200	0.00	0.00%	9,504	163,391,380	40,847.85	7,450,404	21,042	9,084
PEPC	3,120	3,120	3,120	3,120	20.00	▲0.64%	200	624,000	156.00	233,828	8,811	3,004	
22/10/20	Index	654.52	656.13	652.19	655.56	0.94	▲0.14%	77,047	326,769,510	81,692	9,942,784	188,124	36,964
	PPWSA	5,920	6,080	5,800	6,020	0.00	0.00%	7,533	43,892,920	10,973.23	523,578	27,910	5,207
	GTI	3,200	3,200	3,200	3,200	0.00	0.00%	470	1,504,000	376.00	128,000	3,544	1,264
	PPAP	11,700	11,700	11,700	11,700	20.00	▲0.17%	20	234,000	58.50	242,007	5,522	1,243
	PPSP	2,200	2,210	2,000	2,090	-130.00	▼5.85%	58,599	121,904,990	30,476.25	150,219	103,627	12,355
	PAS	13,900	14,200	13,900	14,180	280.00	▲2.01%	2,520	35,636,600	8,909.15	1,216,246	9,834	2,758
	ABC	17,200	17,240	17,180	17,200	0.00	0.00%	7,024	120,851,880	30,212.97	7,450,404	29,778	9,764
PEPC	3,120	3,120	3,100	3,100	-10.00	▼0.32%	881	2,745,120	686.28	232,330	7,909	4,373	
21/10/20	Index	655.54	655.97	654.29	654.62	-1.05	▼0.16%	31,797	221,960,140	55,490	9,928,448	110,507	31,681
	PPWSA	6,020	6,020	5,980	6,020	0.00	0.00%	282	1,695,840	423.96	523,578	34,060	3,903
	GTI	3,300	3,300	3,200	3,200	-150.00	▼4.47%	500	1,620,000	405.00	128,000	6,000	2,224
	PPAP	11,640	11,680	11,640	11,680	40.00	▲0.34%	58	676,640	169.16	241,593	5,610	1,868
	PPSP	2,220	2,220	2,210	2,220	-30.00	▼1.33%	20,136	44,700,560	11,175.14	159,563	30,668	6,962
	PAS	13,900	13,900	13,900	13,900	0.00	0.00%	300	4,170,000	1,042.50	1,192,230	10,153	3,049
	ABC	17,220	17,240	17,200	17,200	-20.00	▼0.11%	9,669	166,443,380	41,610.85	7,450,404	17,194	9,615
PEPC	3,110	3,120	3,110	3,110	0.00	0.00%	852	2,653,720	663.43	233,079	6,822	4,060	
20/10/20	Index	658.45	658.45	655.00	655.67	-0.50	▼0.08%	22,542	143,742,790	35,936	9,944,440	122,165	34,105
	PPWSA	6,080	6,080	6,020	6,020	0.00	0.00%	227	1,369,520	342.38	523,578	25,775	3,129
	GTI	3,350	3,350	3,350	3,350	0.00	0.00%	100	335,000	83.75	134,000	4,059	1,193
	PPAP	11,640	11,640	11,540	11,640	-20.00	▼0.17%	257	2,979,580	744.90	240,766	5,671	1,888
	PPSP	2,250	2,250	2,230	2,250	-30.00	▼1.31%	11,136	25,018,280	6,254.57	161,719	41,118	9,651
	PAS	13,900	14,060	13,900	13,900	-80.00	▼0.57%	384	5,337,920	1,334.48	1,192,230	11,294	1,823
	ABC	17,280	17,280	17,200	17,220	20.00	▲0.11%	5,411	93,074,500	23,268.63	7,459,067	22,387	10,393
PEPC	3,200	3,200	3,090	3,110	-90.00	▼2.81%	5,027	15,627,990	3,907.00	233,079	11,861	6,028	
19/10/20	Index	659.34	659.34	656.17	656.17	-1.00	▼0.15%	12,952	154,265,130	38,566	9,951,953	95,171	44,573
	PPWSA	6,080	6,080	6,000	6,020	20.00	▲0.33%	573	3,468,360	867.09	523,578	11,274	6,571
	GTI	3,350	3,350	3,340	3,350	0.00	0.00%	543	1,816,850	454.21	134,000	3,946	1,367
	PPAP	11,660	11,660	11,640	11,660	20.00	▲0.17%	147	1,712,400	428.10	241,180	10,352	4,031
	PPSP	2,300	2,300	2,280	2,280	0.00	3.58%	1,890	4,342,900	1,085.73	163,875	18,870	11,298
	PAS	13,980	14,000	13,900	13,980	0.00	0.00%	1,144	15,984,400	3,996.10	1,199,092	13,513	4,161
	NEW	17,300	17,300	17,200	17,200	-40.00	▼0.23%	7,082	121,906,620	30,476.66	7,450,404	25,564	7,170
PEPC	3,200	3,200	3,200	3,200	0.00	0.00%	1,573	5,033,600	1,258.40	239,824	11,652	9,975	
16/10/20	Index	658.54	660.44	657.17	657.17	0.58	▲0.09%	12,460	160,433,570	40,108	9,967,127	113,482	39,001
	PPWSA	6,080	6,080	6,000	6,000	0.00	0.00%	851	5,109,900	1,277.48	521,839	11,551	4,865
	GTI	3,590	3,590	3,350	3,350	0.00	0.00%	143	486,730	121.68	134,000	4,441	5,270
	PPAP	11,700	11,700	11,500	11,640	40.00	▲0.34%	713	8,206,080	2,051.52	240,766	5,704	2,595
	PPSP	2,300	2,300	2,260	2,280	-10.00	▼0.43%	2,223	5,090,920	1,272.73	163,875	42,181	6,747
	PAS	14,200	14,200	13,900	13,980	0.00	0.00%	726	10,150,520	2,537.63	1,199,092	11,858	2,645
	ABC	17,200	17,300	17,200	17,240	20.00	▲0.11%	7,572	130,647,020	32,661.76	7,467,730	30,848	12,932
PEPC	3,200	3,200	3,200	3,200	0.00	0.00%	232	742,400	185.60	239,824	6,899	3,947	
14/10/20	Index	658.29	658.55	655.58	656.59	-0.46	▼0.07%	14,785	176,026,660	44,007	9,958,355	125,064	31,254
	PPWSA	5,900	6,000	5,900	6,000	-80.00	▼1.31%	1,974	11,828,780	2,957.20	521,839	6,404	3,282
	GTI	3,350	3,350	3,350	3,350	0.00	0.00%	280	938,000	234.50	134,000	4,063	2,030
	PPAP	11,700	11,700	11,500	11,600	0.00	0.00%	1,012	11,640,220	2,910.06	239,939	6,075	2,049
	PPSP	2,290	2,300	2,250	2,290	0.00	0.00%	2,115	4,763,500	1,190.88	164,594	42,315	4,529
	PAS	14,200	14,200	13,960	13,980	0.00	0.00%	164	2,295,220	573.81	1,199,092	17,036	3,183
	ABC	17,200	17,300	17,200	17,220	0.00	0.00%	8,203	141,242,540	35,310.64	7,459,067	34,992	10,513
PEPC	3,200	3,200	3,200	3,200	0.00	0.00%	1,037	3,318,400	829.60	239,824	14,179	5,668	
13/10/20	Index	659.07	659.07	656.42	657.05	-2.02	▼0.89%	15,316	226,612,540	56,653	9,965,312	134,163	35,999
	PPWSA	6,000	6,080	6,000	6,080	0.00	0.00%	555	3,334,400	833.60	528,797	10,376	10,039
	GTI	3,350	3,350	3,350	3,350	-50.00	▼1.47%	0	0	0.00	134,000	8,038	1,990
	PPAP	11,500	11,600	11,460	11,600	20.00	▲0.17%	35	403,700	100.93	239,939	5,643	1,592
	PPSP	2,280	2,290	2,280	2,290	10.00	▲0.43%	426	974,390	243.60	164,594	42,721	5,659
	PAS	13,980	14,000	13,960	13,980	0.00	0.00%	1,253	17,535,900	4,383.98	1,199,092	17,916	3,569
	ABC	17,280	17,300	17,200	17,220	-60.00	▼0.34%	11,581	199,643,340	49,910.84	7,459,067	30,320	8,074
PEPC	3,250	3,250	3,200	3,200	-50.00	▼1.53%	1,466	4,720,810	1,180.20	239,824	19,149	5,076	
12/10/20	Index	658.24	661.66	658.24	657.05	-2.02	▼0.13%	8,455	133,395,050	33,349	9,969,060	125,014	45,358
	PPWSA	6,080	6,080	6,080	6,080	0.00	1.33%	138	839,040	209.76	528,797	7,246</	

DISCLAIMER

ALL RESEARCH is based on material compiled from data considered to be reliable at the time of writing. However, information and opinions expressed will be subject to change at short notice, and no part of this report is to be construed as an offer or solicitation of an offer to transact any securities or financial instruments whether referred to herein or otherwise. We do not accept any liability directly or indirectly that may arise from investment decision-making based on this report. The company, its directors, officers, employees and/or connected persons may periodically hold an interest in the securities mentioned.

All Rights Reserved. No part of this publication may be used or re-produced without expressed permission from **ACLEDA SECURITIES PLC.**

ACLEDA IN GROUP

ACLEDA BANK PLC.

HEADQUARTERS

61, Preah Monivong Blvd., Sangkat Srah Chork,
Khan Daun Penh, Phnom Penh, Kingdom of Cambodia.
P.O. Box: 1149
Tel: (855) 23 998 777 / 430 999
Fax: (855) 23 998 666 / 430 555
E-mail: acledabank@acledabank.com.kh
Website: www.acledabank.com.kh
SWIFT: ACLBKHPP

ACLEDA BANK PLC.

CASH SETTLEMENT, SECURITIES REGISTRAR, SECURITIES TRANSFER, AND
PAYING AGENT

HEADQUARTERS

61, Preah Monivong Blvd., Sangkat Srah Chork,
Khan Daun Penh, Phnom Penh, Kingdom of Cambodia.
P.O. Box: 1149
Tel: (855) 23 998 777 / 430 999
Fax: (855) 23 998 666 / 430 555
E-mail: acledabank@acledabank.com.kh
Website: www.acledabank.com.kh
SWIFT: ACLBKHPP

ACLEDA BANK LAO LTD.

HEADQUARTERS

#398, Corner of Dongpalane and Dongpaina Road, Unit 20,
Phonesavanh
Neua Village, Sisattanak District, Vientiane Capital, Lao PDR.
P.O. Box: 1555
Hotline :1800
Tel: +856 (0)21 264 994 / 264 998
Fax: +856 (0)21 264 995/ 219 228
E-mail: acledabank@acledabank.com.la
Website: www.acledabank.com.la
SWIFT: ACLBLALA

ACLEDA SECURITIES PLC.

HEADQUARTERS

5th Floor, ACLEDA Building
61, Preah Monivong Blvd., Sangkat Srah Chork,
Khan Daun Penh, Phnom Penh, Kingdom of Cambodia.
Tel: (855) 23 723 388 / 999 966 / 999 977
Email: acs.rep@acledasecurities.com.kh
Website: www.acledasecurities.com.kh

ACLEDA INSTITUTE OF BUSINESS

HEADQUARTERS

Address: #1397, Phnom Penh-Hanoi
Friendship Blvd., Phum Anlong Ngan, Sangkat Khmuonh, Khan
Saensokh, Phnom Penh, Kingdom of Cambodia
P. O. Box: 1149
Tel: + 855 (0)23 881 790 / 999 944
E-mail: info@acleda-aib.edu.kh
Website: www.acleda-aib.edu.kh

ACLEDA MFI MYANMAR CO., LTD.

HEADQUARTERS

#186(B), ShweGonTaing Road, Yae Tar Shae Block,
Bahan Township, Yangon Region,
The Republic of the Union of Myanmar.
Tel: (+95-1) 559 475 / 552 956
Website: www.acledamfi.com.mm